

# AUDIO INTERFACE SYSTEM

MODELS AIS-10, AIS-10E

## Instruction Sheet



### DESCRIPTION

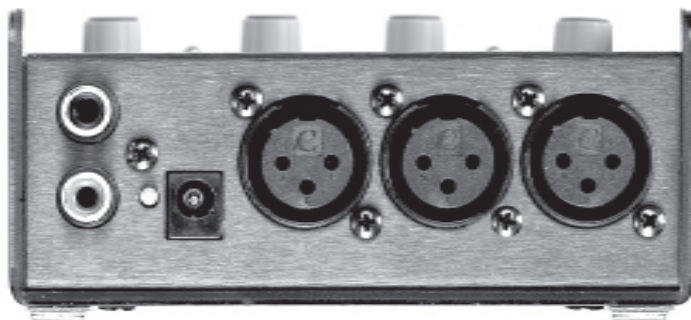
The AIS-10 Audio Interface System is a two-channel line level signal router and high quality microphone preamplifier designed to assist in making accurate acoustical measurements using computer-based analyzer software systems (e.g., SmaartLive™ from SIA Software Company, Inc.) The AIS-10 system eliminates the need for a separate mic preamp and mixer.

The AIS-10 is rugged, compact (4.5" W x 2" H x 3" D) and fits easily into a laptop case. The front panel controls include a microphone gain control, a 48 VDC phantom power switch, a reference line level input (EQ IN) control, a measurement line level input (EQ OUT) control, and a switch to select between the microphone input or the line level input (from the EQ output) on the measurement channel.

The AIS-10 delivers low phase shift, a wide frequency response, and extremely low distortion and noise. Additional features include level controls optimized for measurement systems and a dual ganged output level control. The AIS-10 is powered with a 12 VAC, 500 mA external power supply included with the unit. The mixer outputs to the computer are unbalanced RCA jacks. Three balanced XLR connectors are provided for microphone and line inputs.

The AIS-10 is the result of a collaboration of industry professionals with a deep commitment to providing top quality and highly useful pro-sound products. This product is the first in a series that is aimed specifically at the live sound and touring market segment.

Model AIS-10E is a version which can be used in countries with 220/240 VAC mains. Model AIS-10E (unlike AIS-10) does not come with an external power supply. The user must provide an appropriate power supply ("wall wart") supplying 12 VAC at 500 mA via a female plug with dimensions of 2.1mm (inner hole diameter), 5.5mm (outer ring diameter) by 11mm (length). See connector diagram on the next page. The AIS-10E's total power draw is 3.25VA. Do not use the AIS-10E with a DC power supply, or a voltage or current rating other than specified.



Rear View

### THREE YEAR WARRANTY

Furman Sound, Inc., having its principal place of business at 1997 South McDowell Blvd., Petaluma, CA 94954 ("Manufacturer") warrants its AIS-10 and/or AIS-10 E (the "Product") as follows:

Manufacturer warrants to the original Purchaser of the Product that the Product sold hereunder will be free from defects in material and workmanship for a period of three years from the date of purchase. The Purchaser of the product is allowed fifteen days from the date of purchase to complete warranty registration by mail or on-line at the Furman website. If the Product does not conform to this Limited Warranty during the warranty period (as herein above specified), Purchaser shall notify Manufacturer in writing of the claimed defects. If the defects are of such type and nature as to be covered by this warranty, Manufacturer shall authorize Purchaser to return the Product to the Furman factory or to an authorized Furman repair location. Warranty claims should be accompanied by a copy of the original purchase invoice showing the purchase date; this is not necessary if the Warranty Registration was completed either via the mailed in warranty card or on-line website registration. Shipping charges to the Furman factory or to an authorized repair location must be prepaid by the Purchaser of the product. Manufacturer shall, at its own expense, furnish a replacement Product or, at Manufacturer's option, repair the defective Product. Return shipping charges back to Purchaser will be paid by Manufacturer.

THE FOREGOING IS IN LIEU OF ALL OTHER WARRANTIES, EXPRESS OR IMPLIED, INCLUDING BUT NOT LIMITED TO THE IMPLIED WARRANTIES OF MERCHANTABILITY AND FITNESS FOR A PARTICULAR PURPOSE. Manufacturer does not warrant against damages or defects arising out of improper or abnormal use of handling of the Product; against defects or damages arising from improper installation, against defects in products or components not manufactured by Manufacturer, or against damages resulting from such non-Manufacturer made products or components. This warranty shall be cancelable by Manufacturer at its sole discretion if the product is modified in any way without written authorization from Furman Sound. This warranty also does not apply to Products upon which repairs have been affected or attempted by persons other than pursuant to written authorization by Manufacturer.

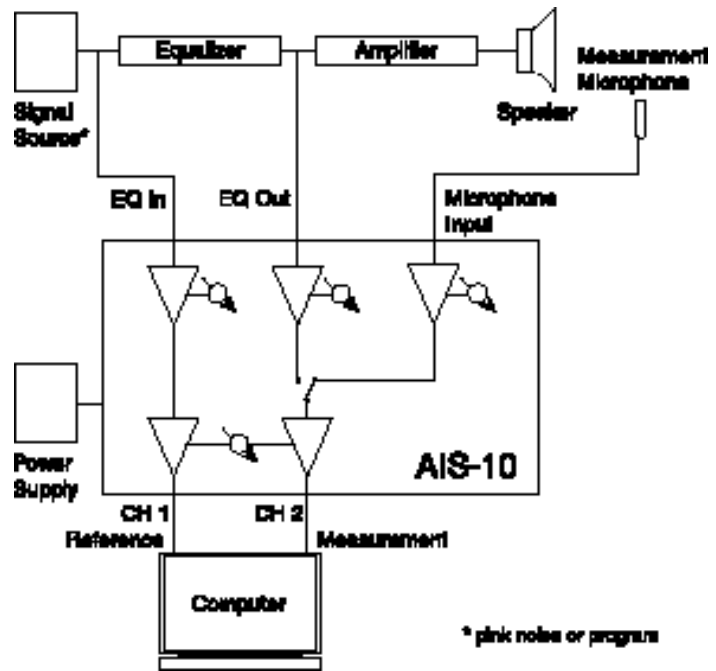
THIS WARRANTY IS EXCLUSIVE. The sole and exclusive obligation of Manufacturer shall be to repair or replace the defective Product in the manner and for the period provided above. Manufacturer shall not have any other obligation with respect to the Products or any part thereof, whether based on contract, tort, strict liability or otherwise. Under no circumstances, whether based on this Limited Warranty or otherwise, shall Manufacturer be liable for incidental, special, or consequential damages. Manufacturer's employees or representatives' ORAL OR OTHER WRITTEN STATEMENTS DO NOT CONSTITUTE WARRANTIES, shall not be relied upon by Purchaser, and are not a part of the contract for sale or this limited warranty. This Limited Warranty states the entire obligation of Manufacturer with respect to the Product. If any part of this Limited Warranty is determined to be void or illegal, the remainder shall remain in full force and effect.

### SERVICE

Before returning any equipment for repair, please be sure that is adequately packed and cushioned against damage in shipment, and that it is insured. We suggest you save the original packing and use it to ship the product for servicing. Also, please enclose a note giving your name, address, phone number and a description of the problem.

NOTE: All equipment being returned for repair must have a Return Authorization (RA) number. To get a RA number, please call the Furman Service Department at (707) 763-1010 ext. 40 between 8am and 5 pm US Pacific Time. Please display your RA number prominently on the front of all packages.

## AIS-10 Typical Connections



\* pink noise or program

### AIS-10/AIS-10E SPECIFICATIONS

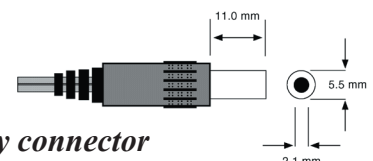
#### LINE INPUTS TO LINE OUTPUTS:

Input impedance:	24k ohms
Common mode rejection:	90 dB
Maximum input:	+28.5 dBu
Maximum output:	+22 dBu
Frequency response:	+0, -0.5 dB, 10 Hz to 70 kHz
Phase +/-10 deg.:	10 Hz to 50 kHz
THD + noise:	0.0006%, 20 Hz to 20 kHz, +10 dBu input/output
Noise:	-98 dBu, 20 Hz to 22 kHz

#### MICROPHONE INPUT TO LINE OUTPUT:

Input impedance:	8kohms
Common mode rejection:	60 dB to 100 dB
Maximum input:	+15.5 dBu
Gain:	+13 dB to +64 dB
Frequency response (40 dB):	+0, -0.5 dB, 10 Hz to 100 kHz
Phantom supply:	+48 volts +/- 10%, 10 mA
THD + noise:	<0.001% 20 Hz to 20 kHz +10 dBu input, +10 dBu output
E.I.N., 50 Ohm source	-131 dB 20 Hz to 22 kHz

#### AIS-10E POWER REQUIREMENTS



**Required power supply connector  
for Model AIS-10E**